

## SmartKey® Locker Illuminated

taking today's  
keys into  
tomorrow



The Morse Watchmans SmartKey® Locker Illuminated asset management lockers are ideal for securing larger objects such as laptops, mobile phones, cash trays, hand-held radios, weapons, data terminals, personal items, and more. Set up SmartKey Locker systems as a personal metal locker storage space for one or multiple users.

This expandable and scalable solution provides flexibility to add on as needs grow and change. Start with a single cabinet, or configure a system with multiple locker cabinets. Designed with scalability in mind, each additional metal locker storage unit can be controlled by a single console and monitored by the advanced KeyPro III™ software. Items can be returned to any security locker system for convenience.

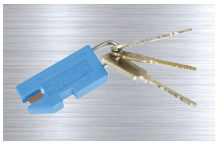
The SmartKey Locker Illuminated is designed with the ability to communicate across systems without costly installations. These electronic locker systems have a built-in RS-232 communications port for direct connectivity to printers and other devices, or networked connectivity via Ethernet.



# SmartKey Locker Illuminated® Module Options



## Accessories



### SmartKeys

Track key users, removals, and returns with an ID chip.



### KeyPro III™ Software

Enhances programming and reporting. Email alerts track SmartKeys



### Identity Access Options

Choose from hand readers, swipe cards, fingerprint readers, and touchpads

## About The SmartKey Locker Illuminated

Like all Morse Watchmans asset management solutions, SmartKey Locker systems are engineered for complete interactivity with other business systems. By opening up our protocols to a wide range of integration partners, Morse Watchmans makes it possible to implement connectivity across systems on any level chosen. For example, by integrating the Smart Key Locker system with the access control system, the access control system will know which users are in the facility and which users are not. A user who has taken an object from a SmartKey Locker can be denied egress from the facility until the object is returned. Managers and administrators can also be alerted automatically via email if an item has not been returned.

By designing SmartKey Locker systems with the ability to communicate across systems, Morse Watchmans helps customers maintain best-in-class security solutions without the need to overhaul or replace equipment and without costly installations.

SmartKey Locker systems have a built-in RS-232 communications port for direct connectivity to printers and other electronic devices, or networked connectivity via Ethernet. It's easy to expand scalable SmartKey Locker systems as needs grow and change. Start with a single cabinet, or configure a system with multiple cabinets. Each additional unit can be controlled by a single console and monitored by the KeyPro III™ software.

## KeyPro III™ Performance Software:

SmartKey Lockers operate with Morse Watchmans KeyPro III™ Software to enhance installation, programming, customization, maintenance and reporting capabilities. Morse Watchmans KeyPro III™ Software provides extensive reporting options, centralized programming, advanced network capabilities, improved system communications, and real-time transaction polling. A user-friendly interface allows for easy customization.

### KeyPro III Features:

**Real-time Transaction Polling** - A built-in scheduler automatically downloads all data to centralized or remote computers.

**Exclusive Synchronization** - The sync function lets system managers easily transmit their own programming modifications anytime from multiple locations.

**Maximized Network Capabilities** - System administrators can manage multiple SmartKey Locker systems and generate reports from remote locations.

**Extensive Reporting** - Reports can be generated based on specific key, user or alarm transactions. KeyPro III™ software provides comprehensive reporting methods

**Local Area Network Access** - Accessibility to the key management systems over a LAN enables managers to perform functions on any SmartKeyLocker from any remote location via TCP/I.